

Cocif Portfolio



doors windows
cocif.com

PROJECT

Architects, interior designers and project managers have always been able to rely on Cocif project experience and production flexibility.

Cocif technicians follow their instructions from the very beginning of the creative process, taking care in choosing the raw materials, as well as the colours and accessories, for the development of products on demand.

Cocif guarantees the correct execution of on-demand projects by delivering the most demanding requests with absolute precision, efficiency and quickly.

Cocif Project, the best partner for your customised projects.

Project, tailor made solutions by Cocif

Welcome to the world where everything is possible

Progetti su misura di Cocif
Benvenuti nel mondo dove tutto è possibile.
Da sempre architetti, arredatori e direttori lavori possono contare sull'esperienza progettuale e la flessibilità produttiva di Cocif. I tecnici Cocif seguono le loro indicazioni fin dall'inizio del processo creativo, curando la scelta delle materie prime, delle tinte e degli accessori, per la realizzazione di prodotti a richiesta.

Cocif garantisce la cura di esecuzione del progetto on demand riuscendo a soddisfare le richieste più varie con assoluta precisione, efficienza e tempi rapidi.

Project di Cocif, il miglior partner esecutore per i vostri progetti su misura.

Project, les solutions sur mesure par COCIF
Bienvenue dans le monde où tout est possible.
Les architectes, les designers d'intérieurs et les gestionnaires de projets ont toujours pu s'appuyer sur l'expérience de Cocif Project et sur la flexibilité de sa production. Les techniciens Cocif suivent leurs instructions dès le début du processus créatif en prenant soin de choisir les matériaux, tout comme les couleurs et les accessoires pour le développement des produits sur demande. Cocif vous garantit une parfaite exécution de vos projets en vous livrant les requêtes les plus exigeantes avec une précision absolue, efficace et rapide.
Cocif Project, le meilleur partenaire pour personnaliser vos projets.

Demanda nos
produits
certifiés FSC

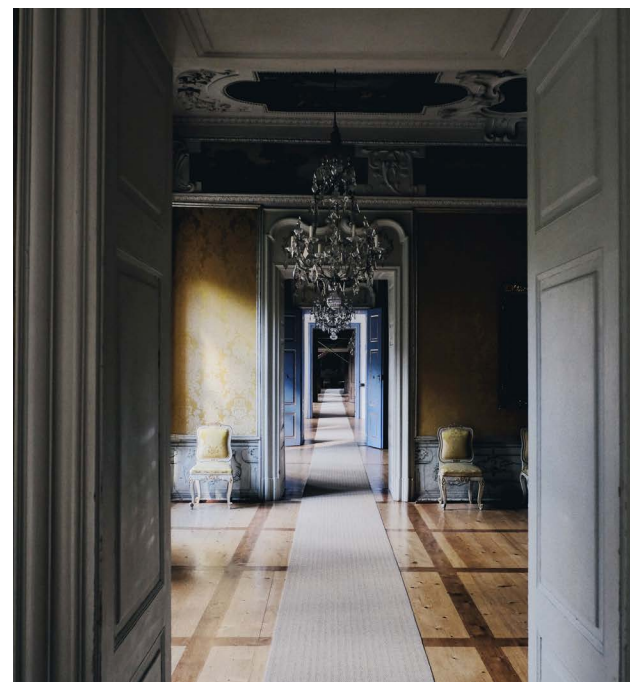
Ask for our FSC
certified products





Model on demand customized color by Cocif Project

Modèles sur demandes aux Couleurs personnalisées par Cocif Project
Modelli realizzati a disegno con colori personalizzati con Project by Cocif



Model on demand customized color by Cocif Project



Capitel line
Linea capitellif Ligne chapiteau

Modèles sur demandes aux Couleurs personnalisées par Cocif Project
Modelli realizzati a disegno con colori personalizzati con Project by Cocif



Model on demand customized color by Cocif Project

Modèles sur demandes aux Couleurs personnalisées par Cocif Project
Modelli realizzati a disegno con colori personalizzati con Project by Cocif

Contract

AN EXCLUSIVE AND FUNCTIONAL DESIGN FOR HOTELS, TOURIST STRUCTURES, HOSPITALS AND WELLNESS CENTERS.
UN DESIGN EXCLUSIF ET FONCTIONNEL POUR LES HÔTELS, STRUCTURES TOURISTIQUES, HÔPITAUX ET CENTRES DE BIEN-ÊTRE.
UN DESIGN ESCLUSIVO E FUNZIONALE PER HOTEL, STRUTTURE TURISTICHE, OSPEDALI E CENTRI BENESSERE.

Hospitality / Hôtellerie

FOR HOTELS / TOURIST BUILDINGS.
POUR LES HÔTELS / STRUCTURES TOURISTIQUES
PER LE STRUTTURE TURISTICO-ALBERGHIERE.

Hospital & School / Hôpitaux et Ecoles

A LINE PARTICULARLY APPROPRIATE FOR HEALTH CARE FACILITIES AND SCHOOL.
UNE LIGNE PARTICULIÈREMENT APPROPRIÉE AUX INSTALLATIONS
DE PREVENTION SANITAIRES ET AUX ÉCOLES
UNA LINEA PARTICOLARMENTE DEDICATA ALLE STRUTTURE SANITARIE E SCUOLE.

Wellness / Centres de Bien-Être

WELLNESS AND COMFORT IN PUBLIC CONTEST.
UNE LIGNE DÉDIÉE AUX ESPACES DE BIEN-ÊTRE ET CONFORT
IL BENESSERE E IL CONFORT IN UNA COLLEZIONE
DEDICATA ALLE STRUTTURE PUBBLICHE.

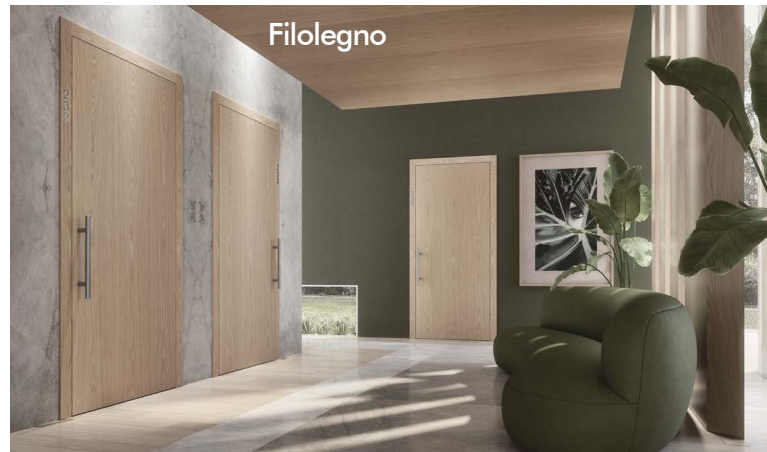


Plana

Door flush with external architraves - glossy white
Porte affleurante extérieure, encadrement en boiseries. Blanc
Porta a filo esterno con coprifili laterali - bianco lucido

Cocif's efficient manufacturing methods and new exclusive models match perfectly, thus meeting any interior-design requirement.

The contract collection create Suitable solutions from the residential structures to 5-star luxury hotels, always respecting the main features and proposing new solutions. In order to conform to safety and fire regulations, holiday resorts and hotels can now rely upon Cocif's products and technology. Contract doors, Cocif's brand-new collection of doors for hotels, have been registered and certified by the ministry of interior and comply with the strict regulations REI 30 and REI 60 on fire resistance. Contract doors for your costumers' best comfort are on request available in a 35, 38,5, 42 db-rated Sound-proof version.



Filelegno

Plana

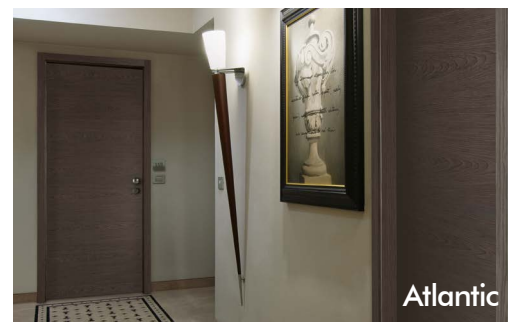
Door flush with external architraves. Porte affleurante côté externe, encadrements extérieurs avec couvre joint laterals
 Porta a filo esterno con coprifili laterali
 ALPI Xilo 2,0 Flamed Sand curated by Piero Lissoni - Créé par Piero Lissoni
 Variante orizontale - Horizontal flame - Décor horizontal

Plana

Door flush with external architraves - white veneered texture. Porte affleurante côté externe, encadrements extérieurs avec couvre joint laterals, texture placage blanc.
 Porta a filo esterno con coprifili laterali - texture bianco poro aperto.



Plana



Atlantic

Les méthodes efficaces de fabrication de Cocif et les nouveaux modèles exclusifs s'accordent parfaitement, pour répondre à toutes les demandes de design d'intérieur.

La collection Contract crée des solutions appropriées, à destination des structures résidentielles aux hôtels luxueux 5 étoiles, toujours en respectant les principales caractéristiques et en proposant de nouvelles solutions. Afin d'être conforme aux mesures de sécurité et de protection incendie, les résidences de vacances et les hôtels peuvent compter sur les produits Cocif et leur technologie.

Contract Doors, la toute nouvelle collection de portes pour hôtels, a été enregistrée et certifiée par le ministère de l'intérieur et respecte les strictes réglementations REI 30 et REI 60 contre les incendies.

Contract Doors pour le meilleur confort de vos clients, est disponible en isolation phonique de 35, 38.5 ou 42 Db

Un rigore produttivo che si accompagna, ad un design esclusivo e funzionale.

La collezione contract ci spinge a creare soluzioni adatte dalla piccola struttura residenziale all'hotel a 5 stelle lusso, rispettandone sempre le caratteristiche essenziali e proponendo soluzioni sempre nuove.

Per adeguarsi alle norme di sicurezza e prevenzione incendi, le strutture turistico-alberghiere possono contare sulle porte di questa linea che, certificate e omologate dal ministero dell'interno, rispondono in pieno alle rigide normative di resistenza al fuoco REI 30 e REI 60.

La linea contract offre a richiesta un abbattimento acustico di 35, 38,5 e 42 db per il migliore confort.



Filomuro

Frameless / Porte affleurante coté externe / Porta a filo esterno
Glossy mink / Vison brillant / Visono lucido



Diamante
Capitel 1 / Chapiteau 1 / Capitello 1
Turtle-dove / Tourterelle / Tortora

The Masters

THE ESSENTIAL LINES AND HARMONIOUS SHAPES
OF THE DESIGNER COLLECTION.
LES LIGNES ESSENTIELLES ET LES FORMES HARMONIEUSES DE LA
COLLECTION DESIGN.
LES COLLECTIONS INTEMPORELLES DES MAITRES DU DESIGN ITALIEN
LINEE ESSENZIALI E FORME ARMONIOSE:
LE COLLEZIONI SENZA TEMPO DI MAESTRI DEL DESIGN ITALIANO.

Gae Aulenti

THE REFINED DESIGN THAT EVERYONE WILL MISS.
LE DESIGN RAFFINÉ QUI MANQUERA À TOUT LE MONDE.
IL DESIGN RAFFINATO CHE MANCHERÀ A TUTTI.

Sottsass

A COLLECTION BY ETTORE SOTTASS.
UNE COLLECTION PAR ETTORE SOTTASS.
UNA COLLEZIONE FIRMATA DA ETTORE SOTTASS.

AS WELL AS BEING ONE OF
THE WORLD'S LEADING MODERN
ARCHITECTS, GAE AULENTI AND
ETTORE SOTTASS ARE AMONG THE
GREATEST EXPONENTS OF ITALIAN
STYLE.
THEIR WORK IN THE FIELDS OF
INDUSTRIAL AND INTERIOR DESIGN
REPRESENTS TODAY'S GREATEST
EXPRESSION OF PRESTIGE AND
FUNCTIONALITY.

TOUT EN ÉTANT PARI MI LES PLUS
RENOMMÉS MONDIAUX EN
ARCHITECTURE MODERNE, GAE
AULENTI ET ETTORE SOTTASS
FIGURENT AUSSI PARI MI LES
MEILLEURS REPRÉSENTANTS DU
STYLE ITALIEN. LEUR TRAVAIL DANS
LE SECTEUR DE L'INDUSTRIE ET DU
DESIGN D'INTÉRIEUR REPRÉSENTE
AUJOURD'HUI LA MEILLEURE
EXPRESSION DU PRESTIGE ET DE LA
FONCTIONNALITÉ

TRA I PIÙ IMPORTANTI E
SIGNIFICATIVI ESPONENTI
DELL'ARCHITETTURA MODERNA,
GAE AULENTI ED ETTORE SOTTASS
ERANO E LO SONO ANCORA, CON-
SIDERATI
IL PIÙ COMPLETI ARTEFICI
DELLO STILE E DELLA CREATIVITÀ
ITALIANA NEL MONDO.
LE LORO CREAZIONI NEL CAMPO
DELL'INDUSTRIAL DESIGN E DELL'INTE-
RIOR DESIGN RAPPRESENTANO OGGI
LA MASSIMA ESPRESSIONE DI
FUNZIONALITÀ E DI PRESTIGIO.



Siviglia

ALPI Xilo 2.0 Flamed Grey curated by Piero Lissoni



Mysore

ALPI Xilo 2.0 Flamed Sand
curated by Piero Lissoni - Créée par Piero Lissoni

Design

THE DOOR COLLECTION FEATURES AN EXTENSIVE RANGE OF TOP QUALITY MATERIALS AND FINISHES.
LA COLLECTION DE PORTE POSSÈDE UNE LARGE GAMME DE MATÉRIAUX ET DE FINITIONS DE HAUTE QUALITÉ.
UN PROGRAMMA DI PORTE LA CUI RICCHEZZA È DATA DALLA VASTA GAMMA DI MATERIALI E FINITURE DI PREGIO DISPONIBILI.

Linear

THE NEW ITALIAN ARCHITECTURE'S RULES.
LES NOUVELLES RÈGLES DE L'ARCHITECTURE ITALIENNE.
LE NUOVE REGOLE DELL'ARCHITETTURA ITALIANA.

Linear Vetro

COCIF'S GLASS DOORS.
LES PORTES EN VERRE DE COCIF
LE PORTE IN VETRO DI COCIF.



Quasar

Aluminium / Transparent glass
Aluminium / Vitrage transparent
Alluminio / Vetro trasparente

Quasar 2

2 sliding panels on hidden guide
Coulissant 2 vantaux, sur rail invisible
2 ante scorrevoli su guida nascosta

Aluminium / Traspant glass
Aluminium / Vitrage transparent
Alluminio / Vetro trasparente





Quasar 3

3 sliding panels on 2 hidden guides
Coulissant 3 vantaux sur deux rails invisibles
3 ante scorrevoli su 2 guide nascoste

Quarz grey aluminium / Transparent glass
Aluminium Gris quartz / Vitrage transparent
Alluminio grigio quarzo / Vetro trasparente



Quasar

4 sliding panels on 2 hidden guides
Coulissant 4 vantaux sur deux rails invisibles
4 ante scorrevoli su 2 guide nascoste

Anodized bronze aluminium / Bronze reflex glass
Aluminium bronze anodisé / Vitrage Bronze réfléchissant
Alluminio bronzo anodizzato / Vetro reflex bronzo



Epsilon

White lacquered glass / Black lacquered aluminium
Verre laqué noir / Aluminium noir
Vetro verniciato nero / Alluminio laccato nero

Slim

Single leaf window
Portes fenêtres un vantail
Portafinestra 1 anta



Polaris
To be painted like the wall
Finition identique au mur
Finitura come il muro



Polaris

ALPI Xilo 2.0 Flamed Grey
curated by Piero Lissoni - Créée par Piero Lissoni
Vertical flame Décor vertical
Variante verticale

Door made full height to the ceiling
Porte pleine hauteur jusqu'au plafond Porta
Realizzata a tutta altezza fino al soffitto



Polaris Brillante
Mink
Visone
Laqué Perdrix

Door made full height to the ceiling
Porte pleine hauteur jusqu'au plafond
Porta realizzata a tutta altezza fino al soffitto

Invisible
Single leaf window with concealed hinges.
Porte Fenêtre à 1 Vantail, avec quincaillerie invisible.
Portafinestra 1 anta con ferramenta a scomparsa.

Laminated fir white dyed
Sapin lamellaire teinté blanc
Abete lamellare mordenzato bianco

Trend

NEW DOORS IN TRENDY COLORS.
NOUVELLES PORTES AUX COLORIS TENDANCE.
I COLORI DI TENDENZA SULLE PORTE COCIF.

Catalina

BEAUTIFUL LIKE WOOD STRONGER THAN WOOD.
BEAU COMME LE BOIS, PLUS FORT QUE LE BOIS.
BELLO PIÙ DEL LEGNO FORTE PIÙ DEL LEGNO.

Linear Vetro

NEW DOORS FROM TRENDY COLORS.
NOUVELLES PORTES AUX COLORIS TENDANCE.
I COLORI DI TENDENZA SULLE PORTE COCIF.

Halley

FINE WOODS WITH TOP QUALITY FINISHES.
BOIS FINS AVEC FINITIONS DE QUALITÉ SUPÉRIEURE.
FINITURE DI QUALITÀ CON VERO LEGNO PREGIATO.

Rubicone

STRENGTH, VERSATILITY AND LOW COST.
RÉSISTANCE, POLYVALENTE, FAIBLE COUT.
RESISTENZA, PRATICITÀ E ECONOMICITÀ.

Blindati

ELEGANCE AND SECURITY IN
COCIF'S ENTRANCE DOOR COLLECTION.
ÉLÉGANCE ET SÉCURITÉ DANS LA COLLECTION
DES PORTES D'ENTRÉE COCIF.
ESTETICA E SICUREZZA PER LA COLLEZIONE
PORTONCINI DI COCIF.





Rototraslante
Bianco matrix



Zenit
Palissandro Bianco

Planar
Window with concealed hinges.
Porte Fenêtre, avec quincaillerie invisible.
Portafinestra con ferramenta a scomparsa.

Aluminium / Laminated fir white dyed
Aluminium / Sapin lamellaire teinté blanc
Alluminio / Abete lamellare mordenzato bianco

New classic

LOVE THE HOUSE MADE OF HARMONY AND BEAUTY.
L'AMOUR DE LA MAISON AMÉNAGÉE AVEC HARMONIE ET ÉLÉGANCE.
PER CHI AMA CIRCONDARSI DI COSE BELLE E ARMONIOSE.

iMiti

THE REAL ITALIAN CLASSIC.
L'AUTHENTIQUE CLASSIQUE ITALIEN.
IL VERO CLASSICO ITALIANO.

New Ark

THE NEW CLASSIC INTERPRETATION.
LA NOUVELLE INTERPRÉTATION DU CLASSIC.
LA NUOVA LETTURA DEL CLASSICO.



Urania

White rustico
Blanc rustique
Bianco rustico

Capitel 2 with diamond white frame
Chapiteau 2 avec frises formés de la meme finition de la porte.
Capitello 2 con fregi diamantati in tinta



Aurelia
White 2 Leaves
2 vantaux Laqué Blanc
2 ante Bianco

Aurelia Vetro
White
Laqué Blanc
Bianco

Aurelia
White
Laqué Blanc
Bianco

Windows

WINDOWS AND BUMPING SYSTEMS IN WOOD / ALUMINIUM / PVC.
 SYSTÈME DE FENÊTRES ET FERMETURES EN BOIS/ BOIS ALUMINIUM/PVC.
 FINESTRE E SISTEMI OSCURANTI IN LEGNO / ALLUMINIO / PVC.

Invisible

THE DISCREET WINDOW.
 LA FENÊTRE DISCRÈTE
 IL SERRAMENTO CHE NON SI FA NOTARE.

Evo L/A Evo

THE IDEAL GOLD CLIMATEHOUSE A SOLUTION.
 LA SOLUTION IDÉALE POUR L'ISOLATION
 DE LA MAISON.
 LA SOLUZIONE IDEALE PER LO STANDARD
 CASA CLIMA A.

Slim

COMFORT, ENVIRONMENT, SAFETY.
 CONFORT, ENVIRONNEMENT ET SÉCURITÉ.
 COMFORT, AMBIENTE, SICUREZZA.

Infinity

INFINITY DESIGN
 IL DESIGN ASSOLUTO
 LE DESIGN ABSOLU

Lifter

THE NEW GENERATION SLIDING
 LA NUOVA GENERAZIONE DI SCORREVOLI
 LA NOUVELLE GENERATION DE PORTES
 COULISSANTES

Parallel

PARALLEL SLIDING
 SCORREVOLE PARALLELO
 COULISSANTE PARALLÈLE

Refined & Tender

THE NEW REFINED CLASSIC
 IL DETTAGLIO CLASSICO
 LE DÉTAIL CLASSIAUF

PVC

CONVENIENCE AND INSULATION, NO
 MAINTENANCE.
 FONCTIONNELLE, ISOLANTE ET SANS ENTRETIEN.
 PRATICITÀ E ISOLAMENTO, SENZA
 MANUTENZIONE.

VMC system

VMC INTEGRATED IN THE THERMO-INSULATED
 MONOBLOCK.
 VMC INTÉGRÉE DANS LE MONOBLOC THERMO ISOLÉ.
 VMC INTEGRATA NEL MONOBLOCCO
 TERMOISOLANTE.

Planar

THE RIGOUR OF COMPLANAR DESIGN IN
 AN ALUMINIUM WINDOW.
 LA RIGUEUR DU DESIGN COPLANAIRE DANS
 LA FENÊTRE EN ALUMINIUM
 IL RIGORE DEL DESIGN COMPLANARE IN
 UN SERRAMENTO IN ALLUMINIO.

Slim Barocco

COCIF REINTRODUCES OLD DESIGN WITH
 A MODERN TWIST.
 COCIF ACTUALISE LE DESIGN VINTAGE.
 COCIF RIPROPONE IL DESIGN D'EPOCA
 IN CHIAVE ATTUALE.

Secret

LIGHT IS PRINCIPAL
 SPAZIO ALLA LUCE
 ESPACE PAR LA LUMIERE

Glisser

SIMPLY SLIDING
 SEMPLICE E SCORREVOLE

Vision

THE NEW GENERATION WINDOW
 LA NOVITÀ A TUTTA LUCE
 LA NOUVEAUTÉ EN PLEINE LUMIERE

LightWin System

COMMERCIAL&COMUNE
 SPAZI COMMERCIALI E COMUNI
 ESPACE COMERCIAUX ET COMUNS

Oscuranti

ALUMINIUM OR TIMBER SHUTTER.
 PARE-SOLEIL EN ALUMINIUM OU EN BOIS.
 AND SUNSHADE BLINDS PERSIANE E
 FRANGISOLE ALLUMINIO O LEGNO.

Protect

SECURITY - BURGLARY RESISTANCE CLASS 3.
 LA SÉCURITÉ ANTIÉFFRACTION CLASSE 3.
 LA SICUREZZA - CLASSE ANTIÉFFRAZIONE 3.



Invisible

Portafinestra 1 anta. Single leaf window. Porte fenêtre un vantail
 External: silver aluminium. Externe: aluminium argent. Esterno alluminio argento



Infinity

Alzante scorrevole 2 ante. Sliding french door. Porte fenêtre coulissante 2 vantaux.



Infinity Basic

Alzante scorrevole 2 ante. Sliding french door. Porte fenêtre coulissante 2 vantaux.



Alusystem

Shop windows / door / windows façade

Vitrines / portes vitrées / façades en verre

Vetrine per negozi / portoncini vetrati / facciate a vetro

Polare
Noce vintage

Slim
Single leaf window
Portes fenêtres un vantail
Portafinestra 1 anta

Laminated fir dark grey dyed
Sapin lamellaire teinté gris foncé
Abete lamellare mordenzato grigio scuro



Slim Barocco

2-leaf window + 2-leaf window with concealed hinges.
Porte Fenêtre à 2 Vantaux+ 2 Vantaux avec quincaillerie invisible.
Portafinestra 2 ante + 2 ante con ferramenta a scomparsa.

Turtle-dove
Tourterelle
Tortora

Project List

MAIN INTERNATIONEL REFERENCE PROJECTS.
PRINCIPAUX PROJETS DE RÉFÉRENCE INTERNATIONAUX.
PRINCIPALI REFERENZE INTERNAZIONALI.

RUSSIAN FEDERATION

- HOTEL RADISSON SAS, KALININGRAD [1]
- HOTEL RADISSON DON HOTEL, ROSTOV-ON-DON [2]
- HOTEL STADIUM FK, TYUMEN [3]
- HOTEL AKKORD, MOSCOW
- HOTEL RIVIERA, KAZAN
- HOTEL UKRAINA, MOSCOW [4]
- MULTIFUNCTIONAL THEATRE CONCERT HALL, KHANTY MANSISK [5]
- PRIME MINISTER BUILDING, KAZAN
- PARLIAMENT BUILDING, KAZAN
- HOTEL MIRAGE, KAZAN
- SUVAR HOTEL, KAZAN –THEATER COMPLEX, TYUMEN [6]

UKRAINE

- HOTEL RADISSON BLU, ALUSHTA [7]
- HOTEL PRESIDIUM, KIEV [8]
- HOTEL COSMOPOLITE, KIEV [9]
- HOTEL CITY HOTEL, KIEV
- HOSPITAL FEOFANIA, KIEV
- PODOL PLAZA HOTEL, KIEV [10]
- HOTEL MENORA, DNEPROPETROVSK [11]
- HOTEL MIROTEL, TRUSKAVEC [12]
- HOTEL FRAPOLLI, ODESSA
- PRIVATE VILLA, KIEV [13]
- HOSPITAL OBERIG, KIEV [14]



[1]



[2]



[3]



[4]



[5]



[14]



[6]



[7]



[8]



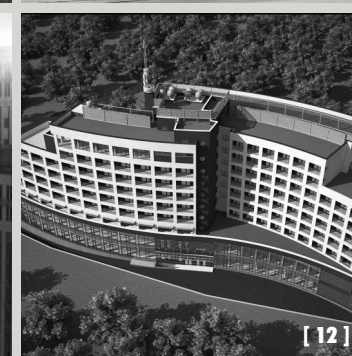
[9]



[10]



[11]



[12]



[13]

GEORGIA

- HOTEL RADISSON COLLECTION, TSINANDALI
- HOTEL COURTYARD BY MARRIOTT, BATUMI [11]
- GUDAURI HILLS RESORT, GUDAURI
- HOTEL HILTON GARDEN INN, TBILISI [3]
- PSP NEW HOSPITALS CLINIC, TBILISI [2]
- KHEDI DESIGN HOTEL, TBILISI

AZERBAIJAN

- HOSPITAL WITH PRESIDENTIAL ADMINISTRATION, BAKU
- UNIVERSITY POLYCLINIC, BAKU
- PRIME HOSPITAL, BAKU [4]

ARMENIA

- HOTEL MARRIOTT, TSAGHKADZOR
- HOTEL METROPOLE, EREVAN
- HOTEL HYATT PLACE, JERMUK [5]

KAZAKHSTAN

- HOTEL HILTON GARDEN INN, ASTANA [12]
- BUSINESS CENTRE Q, ASTANA
- RESIDENTIAL COMPLEX "LONDON", ASTANA
- RESIDENTIAL COMPLEX "TRIUMPHANT", ASTANA
- KAZAKHSTAN NATIONAL ACADEMY OF CHOREOGRAPHY, ASTANA [9]
- RESIDENTIAL COMPLEX "CITY ROMANCE", ASTANA [8]
- BUSINESS CENTRE Q, ALMATY [10]
- RESIDENTIAL COMPLEX "URAL", ATYRAU
- RESIDENTIAL COMPLEX "SARAISHYK", ATYRAU [6]
- TOWNHOUSES "SARAISHYK", ATYRAU [11]
- RESIDENTIAL COMPLEX "GORNOE SOLNCE", ALMATY [7]

NORTH AMERICA & ISLANDS

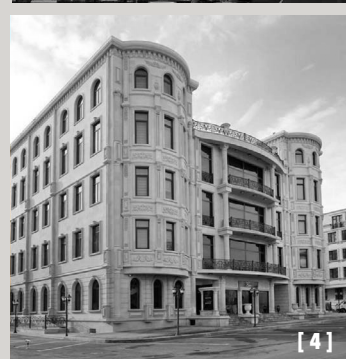
- PRIVATE VILLAS IN FLORIDA AND NEW JERSEY
- SONESTA MAHO BEACH HOTEL (RENOVATION), MAHO BAY SINT MAARTEN, CONTRACTOR: AMAZON CONSTRUCTION LIMITED

USA

- SOLAIA RESIDENTIAL DEVELOPMENT (70 APARTMENTS), NORTH BERGEN -NJ (UL FIRE ENTRY AND INTERIOR DOORS)
- SEVERAL VILLAS BETWEEN NY/NJ/FL/CA (HIGH-END INTERIOR DOORS)

CARIBBEAN

- SONESTA MAHO HOTEL, SINT MAARTEN
- OCEAN POINT HOTEL, SINT MAARTEN
- SKY TOWER, SINT MAARTEN
- ADONIS HOTEL, SINT MAARTEN
- THE EMERALD AT MAHO, SINT MAARTEN
- FOURTEEN MULLET TOWER 1, SINT MAARTEN



EUROPE

IRELAND

- TASSAGARD GREENS HOUSING PROJECT SAGGART, DUBLIN
- ARDILEA HOUSING PROJECT, KILKENNY
- RADISSON BLU ROYAL HOTEL, DUBLIN [1]

GERMANY

- HYPERION HOTEL BERLIN [2]

ITALY

- EXPO 2015 MILAN: JAPAN PAVILION [3]
- COCA COLA PAVILION [4]
- RISO E CACAO PAVILION
- TEATRO PAVILION
- SERVICE BUILDINGS: [5]
- A-B2-C1-F2-G1-H1-US6-H2-G2-D-E
- RESIDENCE CORTEVERDE MILANO [6]
- RESIDENTIAL COMPLEX 200 UNITS SEGRATE, MILANO [7]
- GIAX TOWER MILANO [8]
- SOCIAL HOUSING VIA CENNI MILANO [9]
- PALAZZO PIAZZA DUOMO L'AQUILA [10]
- ING DIRECT HEADQUARTER VIALE FULVIO TESTI MILANO [11]
- SOCIAL HOUSING FIGINO SERENZA, COMO [12]
- RESIDENTIAL SOLFERINO 23 MILANO [13]
- RESIDENTIAL AND INFANTIAL SCHOOL MILANO [14]
- RESIDENTIAL COMPLEX VIA PITTERI MILANO [15]
- POLITECNICO MILANO [16]
- HILTON ROME EUR - LA LAMA - CONNECTED TO "LA NUVOVA BY FUKSAS"[17]

FRANCE

- HOTEL AMBASSADOR MARRIOTT OPERA, PARIS
- HOTEL LES REGALIA, PORTO VECCHIO

MONTECARLO

- HOTEL MIRAMAR, MONACO

CZECH REPUBLIC

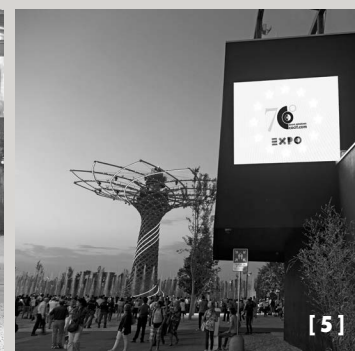
- PODVINNY MLYN HOUSING PROJECT PRAGUE
- POBBABA HOUSING PROJECT PRAGUE -RESIDENCE
- GREEN HOUSE, 42 APARTMENTS, CLIENT GESIM GROUP S.R.O., PRAGUE

CROATIA

- TRSTENIK PROJECT - PHASES 1,2,3 AND 4 IN SPLIT, CLIENT ORA-MONT D.O.O., SPLIT

ROMANIA

- RESIDENTIAL COMPLEX RIVERGATE, BUCHAREST



KINGDOM OF SAUDIA ARABIA

- ROSEWOOD CORNICHE HOTEL, JEDDAH [1]
- INTERCONTINENTAL HOTEL, AL KHOBAR
- RESIDENTIAL BUILDING IN MAKARONA STREET, JEDDAH
- 2 RESIDENTIAL BUILDINGS, RAHMANIAH JEDDAH
- MILLENIUM HOTEL BY NOBOLA, MAKKAH
- SAUDIA AIRLINES CREW ACCOMODATION RENOVATION (13 BUILDINGS G+3 EACH), JEDDAH
- PRIVAT 5 VILLAS COMPOUND, JEDDAH
- AL HAMRA COMPOUND, JEDDAH
- HOLIDAY INN RENOVATION, MAKKAH
- **ALGARAG RESIDENTIAL BUILDINGS, JEDDAH**
- **AL NAHDAH RESIDENTIAL BUILDING, JEDDAH**
- **AL SALEH HOTEL, JEDDAH**
- **MOVENPICK TAHLIA HOTEL, JEDDAH**

**SULTANATE OF OMAN**

- PRIVATE VILLA, BOSCHAR, MUSCAT

QATAR

- MOVENPICK TOWER & SUITES HOTEL, DOHA, AL ASMACK REAL ESTATE [2]
- 2 RESIDENTIAL BUILDINGS, DOHA, SHK. KHALID BIN NASSER AL THANI, AL ASMACK REAL ESTATE
- QATAR TOWER OFFICE BUILDING (B+G+33), DOHA, CLIENT: MR. MOHAMED ZAYED AL KHAYAREEN, MAIN CONTRACTOR: AL HUDA ENGINEERING WORKS [3]
- CITY TOWER (ADDITIONAL JOINERY WORKS) AL DAFNA, DOHA, AL HUDA ENGINEERING [4]
- 41 VILLAS COMPOUND, AL RAYYAN, DOHA
- 30 VILLAS COMPOUND, AL RAYYAN, DOHA
- AL GHANIM APARTMENT 9 BUILDINGS, DOHA, RAMCO TRADING & CONTRACTING [5]
- AL GHANIM HEAD OFFICE BUILDING, DOHA, RAMCO TRADING & CONTRACTING [6]
- 3 RESIDENTIAL BUILDINGS (G+4 EACH), LUSAIL DOHA
- UNION RESIDENTIAL TOWER (B+G+34+HC), DAFNA DOHA, URBACON TRADING & CONTRACTING [7]

ALGERIA

- INCUBATEUR BUILDING IN CYBERPARK SIDI ADBELLAH, MAIN CONTRACTOR: KONTEK INS. SAN. VE TIC. LTD ALGERIERS

LIBYA

- ORTHOPEDIC CLINIC TRIPOLI
- PRIVATE CLINIC MISURATA
- BREGA AND RAS LANUF HIGHER, COMMITTEE HOUSING PROJECT TRIPOLI
- HOSPITAL SWANI –PRIVATE CLINIC BOSHRRA

MADAGASCAR

- 2 RESIDENTIAL BUILDINGS, ANTANANARIVO

NAMIBIA

- OSHAKATI HOSPITAL, OSHAKATI

NIGERIA

- RH PROJECT, LAGOS



UNITED ARAB EMIRATES

- RESIDENTIAL BUILDING, MARSA MARINA DUBAI, CLIENT JANACO INTERNATIONAL
- LADY RATHAN MANOR RESIDENTIAL BUILDING, INTERNATIONAL CITY DUBAI, LOKHANDWALA DEVELOPER
- DONNA TOWERS, DUBAI SILICON OASIS, DEVELOPER & MAIN CONTRACTOR: SEASIF GROUP [1]
- JUMEIRAH BUSINESS CENTRE (5 OFFICE TOWERS B+G+40 EACH), JLT DUBAI, DEVELOPER: AL FAJER PROPERTIES, MAIN CONTRACTOR: AL AHMADIA [2]
- THE MANGROVE PLACE (481 APTS) RESIDENTIAL BUILDING, REEM ISLAND ABU DHABI, CLIENT: LUXURY REAL ESTATE DEVELOPMENT, MAIN CONTRACTOR: GULF TECHNICAL CONSTRUCTION COMPANY [3]
- PRIVATE VILLAS/PENTHOUSES AT MEADOWS/AL WARQAA/ GREEN COMMUNITY /AL-KHAWANIJ/JBR, DUBAI
- 2 RESIDENTIAL BUILDINGS (4B+G+8+HC EACH), AL JADDAF DUBAI, MAIN CONTRACTOR PIVOT ENGINEERING & GENERAL CONTRACTING
- PARK HEIGHTS I & II, MBR CITY, DUBAI HILLS, CLIENT EMAAR, CONTRACTOR SHAPOORJI PALLONJI LLC, CONSULTANT KHATIB & ALAMI, COCIF'S BUYER KHALIDYA INTERSYSTEMS FACTORY LLC (3,000 INTERIOR LACQUERED DOORS)
- DOWNTOWN DUBAI DEVELOPMENT, DOWNTOWN VIEWS II PROJECT, TOWER 3, CLIENT EMAAR, CONTRACTOR CHINA STATE CONSTRUCTION ENGINEERING CORPORATION (MIDDLE EAST) LLC, CONSULTANT ARCH GROUP, COCIF'S BUYER KHALIDYA INTERSYSTEMS FACTORY LLC (2,500 INTERIOR DOORS)

SUDAN

- BORG AL FATEH, KHARTOUM, MAIN CONTRACTOR: C.M.C RAVENNA ITALY [5]
- HILTON RENOVATION (NOW PULLMAN HOTEL) KHARTOUM

SOUTH AFRICA

- THE HOUGHTON LUXURY APARTMENTS, HOUGHTON, JOHANNESBURG
- BEDFORD CENTER, BEDFORDVIEW, JOHANNESBURG [7]
- THE REGENT HOTEL, SANDTON, JOHANNESBURG
- SIZWE HOSPITAL, EDENVALE, JOHANNESBURG

INDIA

- APOSTROPHE PROJECT PUNE
- VOYAGE PROJECT PUNE
- BALMORAL PROJECT, PUNE
- EON PROJECT, PUNE
- LEGACY PROJECT, PUNE
- DEVELOPER & MAIN CONTRACTOR FOR ALL THE PROJECTS ABOVE: KASTURI HOUSING PUNE
- WHITEHALL PROJECT, SARIJAPUR MAIN ROAD, BANGALORE
- DEVELOPER & MAIN CONTRACTOR: PURAVANKARA PROJECTS LTD.
- AVANT GARD , BANGALORE

SRILANKA

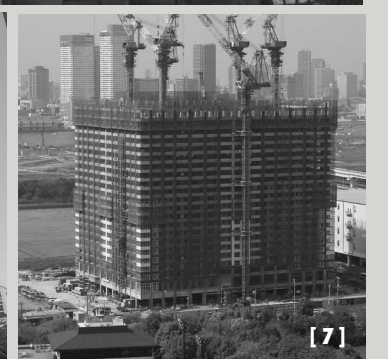
- 96 RESIDENCIES, COLOMBO

CHINA

- ZI CHEN YUAN PROJECT BUILDING N° 6, BEIJING
- DEVELOPER: BEIJING JIAO YUAN ZHI YE REAL ESTATE CO. [4]

JAPAN

- 'BRILLIA MARE' ARIAKE HOUSING PROJECT, TOKYO [6]
- FUKUSHIMA HOUSING PROJECT, OSAKA
- 'AWAJICHO' RESIDENTIAL PROJECT, TOKYO
- 'SANBANCHO' HOUSING PROJECT, TOKYO





Head office

Technical office

Doors department

Windows department

Logistics

Lacquered windows line

Woodshed

Robotized painting plant

Glass manufacture

Door frames department

Aluminium department

Worldwide recognition and certification.
100% premium quality.

PROTECT THE ENVIRONMENT



the FSC® brand identifies products containing wood that comes from forests managed in correct and responsible way for environment, social and economic standard.

THE BEST THERMAL INSULATION FOR ENERGY SAVING

Reinforced entrance DOORS up to 0.91 W/m2K
WINDOWS up to 0.79 W/m2K with Ug 0.4 double glazing and warm edge spacer

ACOUSTIC COMFORT FOR TOTAL PEACE AND QUIET IN THE HOME

Reinforced entrance DOORS up to 45 dB
Contract WINDOWS for the hotel industry up to 42 dB
Hospital DOORS for healthcare facilities up to 35 dB
Interior Living DOORS up to 42 dB

WINDOWS with 2 casements up to 45 dB

PRODUCTS TO PROTECT YOUR HEALTH AND WELL-BEING

Certified under French standards for volatile organic emissions classified Class A+ the best of the 4 available for wooden, lacquered Doors stained and lacquered wood Windows



PROTECT YOUR HOUSE FROM INTRUDERS

Reinforced anti-burglary entrance doors up to Class 4 Windows and French windows, up to 2 casements, with Class 2 burglary resistance

SECURITY FOR CERTIFIED FIRE DOORS

Reinforced entrance doors
FIRE30
FIRE 60
FIRE90

Doors:
Contract Range in wood
REI 30
REI 45
REI 60
Hospital door range
REI 30
Classe 1
RX

FD/UL Doors to British Fire Resisting Standards

FD20
FD 30
FD45
FD 60
FD 90

INSULATE THE HOUSE FROM THE ELEMENTS

2 casement KlimA+ Windows achieve TOP resistance rating under European standards:

AIR PERMEABILITY Class 4 the best performance under UNI EN standards

WATER E1200 (regulation unlimited - pressure up to 1200 Pa

ACQUA E1200 equivalent to around 123 Kg/m2)

WIND C5 (regulation unlimited - pressure up to 3000 Pa

WIND C5 equivalent to around 306 Kg/m2)

CERTIFICATION: EN1634_3

Medium temperature smokes at 200 °C: SM
Cold smokes: SA

PRODUCTS GUARANTEED UNDER EUROPEAN STANDARDS



To comply with security, health and hygiene requirements under the European Construction Products Directive CPD 89/106/CEE, all fittings are marked

CERTIFIED SPECIALIST DOORS (HOSPITAL DOOR)

COCIF Hospital range doors are designed for public buildings, particularly healthcare buildings, and have therefore been tested for compliance with the highest standards in respect of the following security and hygiene requirements.

Durability of the entire door

UNI 8200 Impact resistance
UNI ISO 8275 Vertical load test
UNI ISO 8269 Static loading test (burglary)
UNI CL 158 Resistance to static torsion
UNI CL 159 Frequent use test

Durability of door leaves

UNI EN 85 Resistance to hard body impact
UNI EN108 Deformation in flatness
UNI ISO 8269 Static loading test (burglary)
UNI EN 129 Resistance to deformation by torsion
UNI EN 130 Rigidity test by repeated torsion

Durability of the frame

UNI EN 85 Resistance to hard body impact

Durability of the closer fittings

UNI 9173 Durability of closer fittings

Durability of seals

UNI 9122/2 Durability of closer fittings

Size and geometric requirements

UNI EN 24 Measuring flatness

Handling

UNI ISO 8274 Resistance to opening and closing test

Resistance to humidity

UNI EN 43 Behaviour of door leaves under humidity variations

Door REI 30 / Soundproofing

ISO 140/3 Soundproofing

ISO 354 Sound absorption

UNI 9723 Fire resistance

Door soundproofing

Fire-resistance tests under UNI 8574 and UNI 9174

ISO 565-2 Optical density analysis

EN 50267 Toxicity analysis

Volatile organic compounds

ENV 13419/01 (European standards)

Formaldehyde emissions

ENV 717/1-98 (Europe)

and JISA 5905 (Japan)

CE MARK - EXTERNAL FITTINGS

Shutters

UNI EN 1932:2002 - Resistance to Wind Load Class 6

UNI EN 13659:2004 - (CE Mark)

Sliding shutters

UNI EN 1932:2002 - Resistance to Wind Load Class 6

UNI EN 13659:2004 - (CE Mark)

Door-type shutters

UNI EN 1932:2002 - Resistance to Wind Load Class 6

UNI EN 13659:2004 - (CE Mark)

Reconnaisances et certifications de classe Mondiale.
100% haute qualité.

PRÉSERVER L'ENVIRONNEMENT



La marque FSC® identifie les produits contenant du bois de forêts gérées correctement et de manière responsable selon des normes environnementales, sociales et économiques rigoureuses.

LA MEILLEURE ISOLATION THERMIQUE POUR ÉCONOMISER L'ÉNERGIE

PORTES d'entrée blindées jusqu'à 0,91 W / m²K
FENETRES jusqu'à 0,79 W /m²K avec double vitrage Ug 0,4 et espaceur de bord chaud.

LE CONFORT ACOUSTIQUE POUR VIVRE LA MAISON EN TOUTE TRANQUILLITÉ

PORTES d'entrée blindées jusqu'à 45 db
PORTES Contrat pour hotellerie jusqu'à 42 db
PORTES Hôpital door pour établissements de santé jusqu'à 35 db
PORTES intérieures pour Living jusqu'à 42 db
FENETRES avec 2 vantaux jusqu'à 45 db

PROTÉGER LA SANTÉ AVEC DES PRODUITS SAINS

Certificat d'émission de substances organiques volatiles selon la législation française.

Classé en Classe A + le meilleur sur 4 disponible pour: Portes en bois teinté et laqué.

PROTÉGEZ LA MAISON DES MALINTENUS

Portes d'entrée blindées jusqu'à la classe 4 contre le cambriolage

Fenêtres et portes-fenêtres jusqu'à 2 vantaux en classe 2 contre le cambriolage

LA SÉCURITÉ DES PORTES COUPE-FEU CERTIFIÉES

Portes d'entrée blindées

FIRE 30

FIRE 60

FIRE 90

Portes:

Série Contrat en bois

REI 30

REI 45

REI 60

Série Hôpital door

REI 30

Classe 1

RX

Portes FD / UL selon la réglementation anglo-saxonne

FD20

FD30

FD45

FD60

FD90

ISOLER LA MAISON DES AGENTS ATMOSPHÉRIQUES

Fenêtres 2 vantaux KlimA+ atteignent des niveaux d'étanchéité TOP selon les normes européennes;

AIR 4 la meilleure classe selon la norme UNI EN

EAU E1200 (standard sans limites - pression jusqu'à 1200 Pa

EAU E1200 équivalent à environ 123 Kg / m²)

VENTO C5 (standard illimité - pression jusqu'à 3000 Pa

VENTO C5 équivalent à environ 306 Kg / m²)

CERTIFICATIONS: EN1634_3

Fumées chaudes: SM

Fumées froides: SA



PRODUITS SÛRS GARANTIS SELON LA RÉGLEMENTATION EUROPÉENNE

Tous les menuiseries sont marqués CE selon les exigences de sécurité, d'hygiène et de santé indiquées dans la directive européenne CPD 89/106 / CEE pour les produits de construction.



PORTES SPÉCIALES CERTIFIÉES (PORTE D'HÔPITAL)

Les portes COCIF de la série Hospital Door sont destinées aux environnements publics, en particulier de type sanitaire, afin de répondre aux normes de sécurité et d'hygiène les plus élevées, elles ont été testées pour les exigences suivantes.

Durabilité de la porte dans son ensemble

UNI 8200 Résistance aux chocs
UNI ISO 8275 Test de charge verticale
UNI ISO 8269 Test de charge statique (cambriolage)
UNI CL 158 Test de torsion statique
UNI CL 159 Résistance à une utilisation fréquente

Durabilité de la porte

UNI EN 85 Résistance aux chocs du corps dur
UNI EN108 Résistance à la déformation dans le plan
UNI ISO 8269 Test de charge statique (cambriolage)
UNI EN 129 Résistance à la déformation par torsion
UNI EN 130 Test de rigidité par torsion répétée

Durabilité du cadre

UNI EN 85 Résistance aux chocs du corps dur

Durabilité des éléments de fermeture

UNI 9173 Durabilité des organes de fermeture

Durabilité des joints

UNI9122 / 2 Durabilité des organes de fermeture

Exigences dimensionnelles et géométriques

UNI EN 24 Vérifier la planéité

Maniabilité

UNI ISO 8274 Détermination de la force de fermeture

Résistance aux contraintes hygrométriques

UNI EN 43 Comportement des portes aux variations d'humidité

Porte REI 30 / Isolation phonique

ISO 140/3 Puissance d'isolation acoustique

ISO 354 Absorption acoustique

UNI 9723 Résistance au feu

Porte insonorisée

Réaction au feu selon UNI8574 et UNI 9174

ISO 565-2 Analyse de densité optique

EN 50267 Analyse de la toxicité

Substances organiques volatiles

ENV 13419/01 (normes européennes)

Émission de formaldéhyde

ENV 717 / 1-98 (Europe)

et JISA (Japon)

MARQUAGE CE FENÊTRES EXTERNES

Persienne

UNI EN 1932: 2002 - Résistance au vent classe 6

UNI EN 13659: 2004 - (marquage CE)

Volet coulissant

UNI EN 1932: 2002 - Résistance au vent classe 6

UNI EN 13659: 2004 - (marquage CE)

Volet battante pleine

UNI EN 1932: 2002 Résistance au vent classe 6

UNI EN 13659: 2004 - (marquage CE).

Riconoscimenti e certificazioni di livello Mondiale.
100% alta qualità.

PRESERVARE L'AMBIENTE



Il marchio FSC® identifica i prodotti che contengono legno proveniente da foreste gestite in maniera corretta e responsabile secondo rigorosi standard ambientali, sociali ed economici.

IL MIGLIORE ISOLAMENTO TERMICO PER RISPARMIARE ENERGIA

PORTE d'ingresso Blindate fino a 0,91 W/m²K

FINESTRE fino a 0,79 W/m²K con vetrocamera di Ug 0,4 e distanziatore bordo caldo.

IL COMFORT ACUSTICO PER VIVERE LA CASA IN TOTALE TRANQUILLITÀ

PORTE d'ingresso Blindate fino a 45 db

PORTE Contract per Hotellerie fino a 42 db

PORTE Hospital door per strutture sanitarie fino a 35 db

PORTE interne per Living fino a 42 db

FINESTRE a 2 ante fino a 45db

TUTELARE LA SALUTE CON PRODOTTI SALUBRI

Attestato di emissione sostanze volatili organiche secondo normativa Francese.

Classifica in Classe A+ la migliore su 4 disponibili

per: Porte in legno mordenzato e laccato

PROTEGGERE LA CASA DAI MALINTENZIONATI

Portoncini ingresso blindati fino alla classe 4 contro effrazione

Finestre e Portefinestre fino a 2 ante in classe 2 contro effrazione

LA SICUREZZA DI PORTE IGNIFUGHE CERTIFICATE

Portoncini ingresso blindati

FIRE30

FIRE 60

FIRE90

Porte:

Serie Contract in legno

REI 30

REI 45

REI 60

Serie Hospital door

REI 30

Classe 1

RX

Porte FD/UL secondo normativa anglosassone:

FD20

FD 30

FD45

FD 60

FD 90

ISOLARE LA CASA DAGLI AGENTI ATMOSFERICI

Finestre 2 ante KlimA+ raggiungono livelli di tenuta al TOP secondo Normativa Europea:

ARIA 4 la classe migliore secondo norma UNI EN

ACQUA E1200 (norma senza limiti - pressione fino 1200 Pa

ACQUA E1200 equivalenti a circa 123 Kg/mq)

VENTO C5 (norma senza limiti - pressione fino a 3000 Pa

VENTO C5 equivalenti a circa 306 Kg/mq)

CERTIFICAZIONI: EN1634_3

Fumi Caldi: SM

Fumi freddi: SA



PRODOTTI SICURI GARANTITI SECONDO NORMATIVA EUROPEA

Tutti gli Infissi sono marchiati C E secondo i requisiti di sicurezza, igiene e salute indicati nella direttiva europea CPD 89/106/CEE per i prodotti da costruzione.



PORTE SPECIALI CERTIFICATE (HOSPITAL DOOR)

Le porte COCIF della serie Hospital door sono destinate agli ambienti pubblici, in particolare di tipo sanitario, quindi per rispondere ai più alti standard di sicurezza e di igiene sono state testate per i seguenti requisiti.

Durabilità della porta nel suo insieme

UNI 8200 Resistenza agli urti

UNI ISO 8275 Prova carico verticale

UNI ISO 8269 Prova di carico statico (effrazione)

UNI CL 158 Prova di torsione statica

UNI CL 159 Resistenza a uso frequente

Durabilità dell'anta

UNI EN 85 Resistenza all'urto di corpo duro

UNI EN108 Resistenza alla deformazione nel piano

UNI ISO 8269 Prova di carico statico (effrazione)

UNI EN 129 Resistenza alla deformazione mediante torsione

UNI EN 130 Prova di rigidità mediante torsione ripetuta

Durabilità del telaio

UNI EN 85 Resistenza all'urto di corpo duro

Durabilità degli organi di chiusura

UNI 9173 Durabilità organi di chiusura

Durabilità delle guarnizioni

UNI 9122/2 Durabilità organi di chiusura

Requisiti dimensionali e geometrici

UNI EN 24 Verifica planarità

Manovrabilità

UNI ISO 8274 Determinazione della forza di chiusura

Resistenza a sollecitazioni Igrometriche

UNI EN 43 Comportamento delle ante alle variazioni di umidità

Porta REI 30 / Fonoisolante

ISO 140/3 Potere fonoisolante

ISO 354 Assorbimento acustico

UNI 9723 Resistenza al fuoco

Porta fonoisolante

Reazione al fuoco secondo UNI 8574 e UNI 9174

ISO 565-2 Analisi densità ottica

EN 50267 Analisi tossicità

Sostanze organiche volatili

ENV 13419/01 (standard europei)

Emissione di formaldeide

ENV 717/1-98 (Europa)

and JISA 5905 (Giappone)

MARCATURA CE INFISSI ESTERNI

Persiana

UNI EN 1932:2002 - Resistenza al Carico di Vento classe 6

UNI EN 13659:2004 - (Marchiatura CE)

Persiana Scorrevole

UNI EN 1932:2002 - Resistenza al Carico di Vento classe 6

UNI EN 13659:2004 - (Marchiatura CE)

Scurone

UNI EN 1932:2002 - Resistenza al Carico di Vento classe 6

UNI EN 13659:2004 - (Marchiatura CE)



COCIF

Società Cooperativa

Via Ponte Ospedaletto, 1560

Longiano (FC) Italy

Tel 0547 56144 - Fax 0547 54094

info@cocif.com - www.cocif.com

